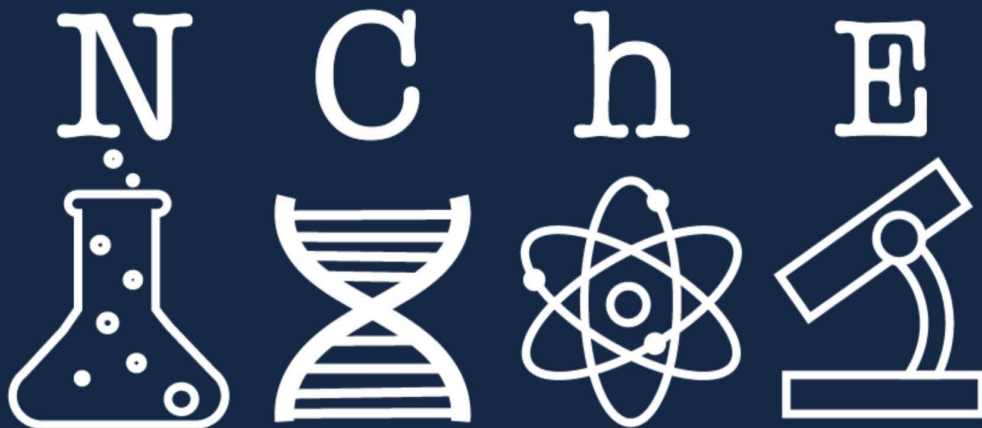


UC San Diego



Nano and ChemE Day
“Find Your NiChE!”
University of California, San Diego

CAREER FAIR

October 27, 2021, 1 - 4 PM

Contents

Description of Events	3
Event Schedule	4
Career Fair Rules	5
Company Biography	6
Zoom Backgrounds	10
Acknowledgements	11

2021 Virtual Nano and ChemE Day at UC San Diego

Welcome to the 2021 Nano and ChemE Day, where you compete with other engineers for the best innovative idea at the Student Innovation Competition, and gain insight into a variety of companies in the field of nano and chemical engineering at the career fair.

At the Student Innovation Competition, participating teams will present their innovative idea, followed by a question and answer session from the judges. Once presentations conclude, judges will vote for the best idea based on five criteria: Clarity/Delivery, Reasonability, Community/Market Familiarity, Potential for Impact, and Quality and Creativity.

At the Career Fair, you will get the opportunity to have one on one conversations with representatives from 18 different companies in the field of nano and chemical engineering.

2021 NChE Schedule & Zoom Links

Wednesday, October 27

1:00 PM - 4:00 PM

Career Fair

Companies	Zoom Link
Genentech, Qualcomm	https://ucsd.zoom.us/j/9441150621 Meeting ID: 9441150621
Intel, HRL Laboratories, Corteva	https://ucsd.zoom.us/j/97275940763 Meeting ID: 97275940763
LLNL, Tioga Research, Chemours	https://ucsd.zoom.us/j/94753623580 Meeting ID: 94753623580
Azzur, EPA	https://ucsd.zoom.us/j/97684100904 Meeting ID: 97684100904
Amway, KGI	https://ucsd.zoom.us/j/8504410559 Meeting ID: 8504410559
Micron, Illumina, Metalchey	https://ucsd.zoom.us/j/98498498352 Meeting ID: 98498498352

2021 NChE Career Fair Rules

1. Download the NChE Pamphlet to view all the attending companies and their associated zoom link. Feel free to visit whichever company you are most interested in!
2. Upon entering the main room:
 - a. Unmute or chat the host to get on the waitlist of the company you want to network with
 - b. Once it's your turn, a board member will put you into a breakout room for some one-on-one time with a company rep.
 - c. In the breakout room, you will be able to share-screen or chat your resume to the rep.
 - d. If you experience any problems, feel free to click on the 'Ask the Host' button below.
 - e. When your time is running out, a committee member will give you a warning. (Max time with a rep is 10 minutes)
 - f. Once your time is up, a board member will return you back into the main room, where you can leave to join any other company's zoom link.
3. Enjoy!

Company Bios



Amway specializes in manufacturing and distributing nutrition, cosmetic, personal care and home products. It is known for becoming the world's largest direct selling company!



The Azzur group provides its partners with full-scale solutions that help them start, scale, and sustain their GxP organizations. Azzur is involved in the biotechnology, pharmaceuticals, and medical device & diagnostic industries.



Chemours Company is a global chemistry company with leading market positions in Titanium Technologies and Thermal & Specialized Solutions.



Corteva Inc. is a major American agricultural chemical and seed company that offers services in crop protection and software to promote agricultural innovation.

Company Bios



The Environmental Protection Agency is an independent executive agency of the United States federal government tasked with environmental protection matters.



Genentech Inc. is an American biotechnology corporation which became a subsidiary of Roche in 2009.

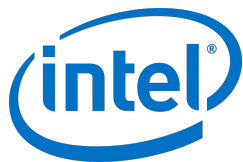


HRL Laboratories is a research center in Malibu, California that enhances technologies for automotive, aerospace, and defense.



Illumina Inc. develops, manufactures, and markets integrated systems for the analysis of genetic variation and biological function.

Company Bios



Intel Corporation works on innovative technology and is the world's largest semiconductor chip manufacturer.



Keck Graduate Institute is a private graduate school in Claremont, California that provides pathways for students to become leaders in healthcare and the life sciences.



Lawrence Livermore National Laboratory is a federal research facility that leads the nation in stockpile science and delivers solutions to the nation's most challenging security problems.

Metalchemy

Metalchemy is a London-based startup developing cutting edge and environmentally friendly nanotech.

Company Bios



Micron Tech. Inc. is an American producer of computer memory and computer data storage including dynamic random access memory, flash memory, and USB flash drives.



Qualcomm is a semiconductor company focused on a single goal - inventing breakthrough technologies that transform how the world connects, computes and communicates.

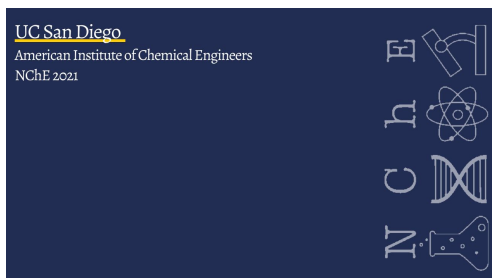
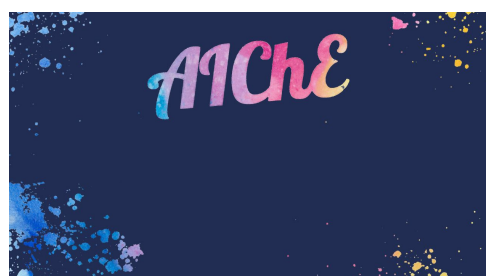
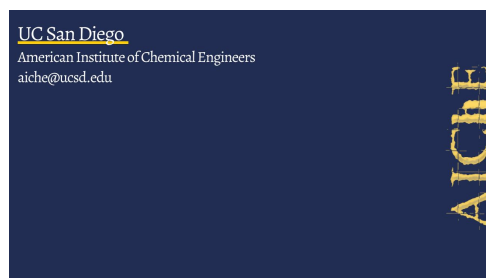
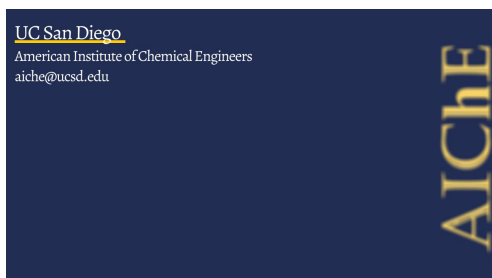


Tioga Research specializes in researching skin-applied products. They research both topical and transdermal drugs as well as various cosmetic and beauty care products.

Zoom Backgrounds

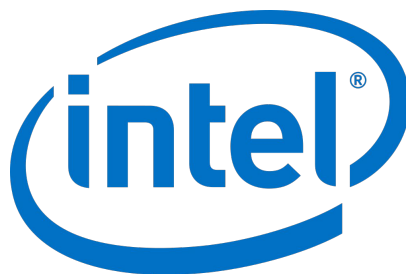
Download the Zoom Backgrounds Here:

<https://drive.google.com/drive/folders/19vTuPMZBfhslobikrpzeWuHBxs0kvJXA?usp=sharing>



Acknowledgements

Thank you for supporting AIChE!



UC San Diego
NanoEngineering